

*This Small tool*

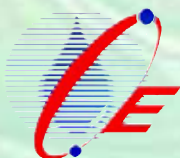
*has the Power you need*

# CE-P2 system

The Capillary Electrophoresis system:

**C**lass **E**leganza:

- The World's Only **P**ortable CE System upgraded to generation **2**  
*with higher voltage, bigger autosampler and better connectivity*



**CE Resources Pte Ltd**

Blk 51, Ayer Rajah Crescent #06-08/09, Ayer Rajah Industrial Estate,  
Singapore 139948

Tel: +65-6779 8208; Fax: +65-6778 2987;

Email: [salesupport@ce-resources.com](mailto:salesupport@ce-resources.com); Website : [www.ce-resources.com](http://www.ce-resources.com)

## Diverse choice of detectors:

The modular design of **CE-P2** makes it compatible with most detectors available in the market, such as UV, PGD, LIF, DAD, C4D, MS, and ECD detectors, etc. In all, **CE-P2** suits the demanding application work, and fits your specific needs for a variety of experimental designs.



CE-P2 interfaced to LIF detector



CE-P2 interfaced to UV-Vis detector

## Portable & light-weight:

This newest model of **CE-P2** is compact, easy to carry because it is not much larger than a notebook computer, and it weighs less than 10kg. It's highly suitable for on-site monitoring of a wide variety of applications in environmental, agricultural and forensic area per se, particularly in the screening for evidence which adds value to forensic work.



Agricultural - Herbicides testing



Environment pollution control-Ion analysis

## Battery-powered & AC-powered:

While the AC-powered design provides an option for in-door laboratory operation, the battery-powered option allows you to take **CE-P2** to just about anywhere: to the field, by the sea, to the scene, or any location where an immediate analysis is desired.



Forensic - on-site DNA testing

## Features and benefits of Capillary Electrophoresis System **CE-P2**

Total redesign to give better quality and higher reliability. A cost effective operation.

The System can work as a portable or as a desk-top unit.

16-position carousel with integrated automated injector enables full control of test steps.



Hydrodynamic injection (0-5psi for accurate injection; and 0-25psi for flushing and filling); With external pressure up to 120psi is achievable.

Electrokinetic injection, voltage  $\pm 25\text{KV}$ , 0.1KV step.

Optional liquid cooling module for the more stringent application requirement for use in a laboratory setting. Temperature range: 10° C below ambient temperature and 30° C above. Control by and Interface with CE Station Software and panel.

Dimension: 14.5 x 11 x 7.5 inch (w x d x h);  
Weight: less than 10kg.

HVPS module. The customer has a choice of 15 or 25 KV high voltage power supply module, automatic polarity switch. Voltage deviation  $<0.05\%$  peak to peak at maximum output.

16-bit Voltage and Current Control giving gradual and uniform output.

2-channel AD converter with 24 bit resolution for data acquisition (DAQ) function.

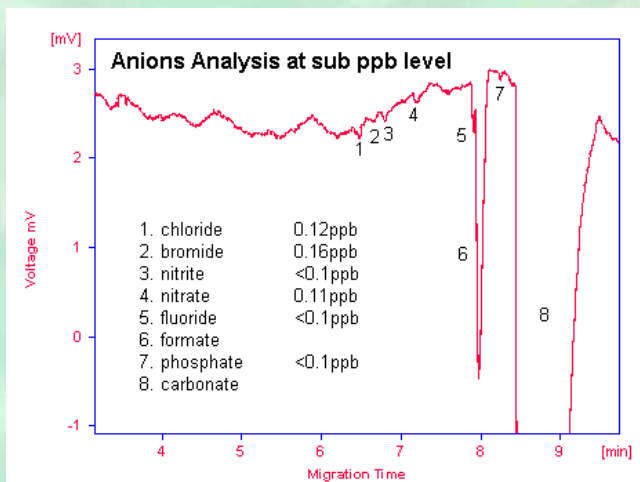
Handheld PC (i.e. PDA) is offered as option to drive the control and DAA software for standalone operation without the need for a laptop.

CE-Station software is workable on all operating platform. Software is GLP compliant, high security for data files and method files. Choice of automatic or manual results calculation. Calibration features built-in. Flexible data management and reporting system.

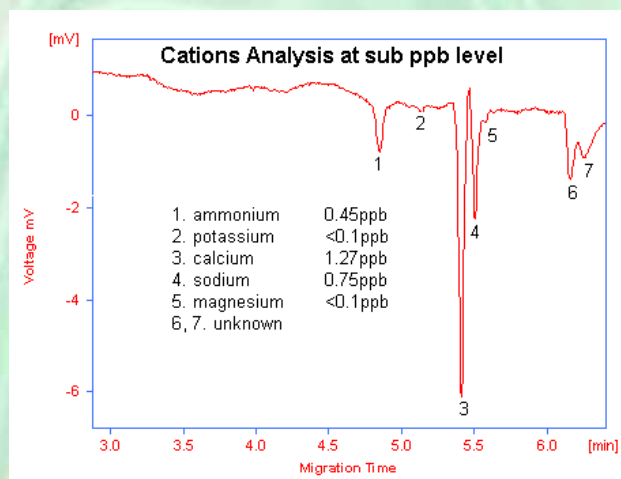


Three interfacing modes for better connectivity and versatility: RS232, USB, and TCP/IP.

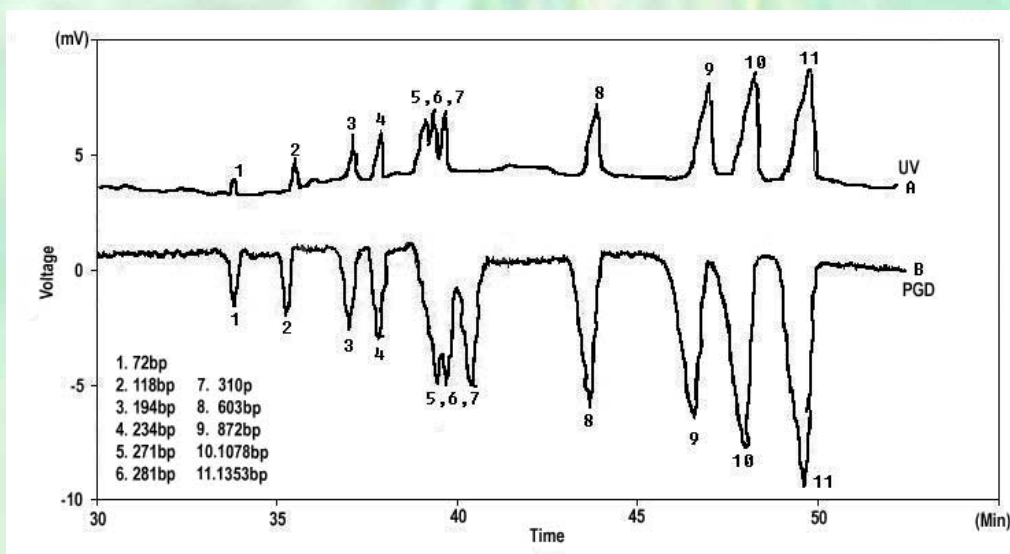
We provide method development, customization & optimization of tailor-made applications



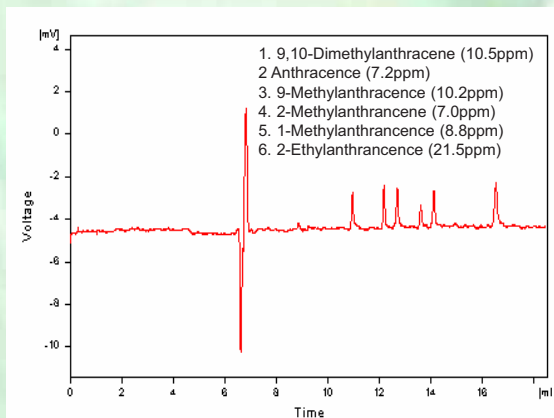
Trace Analysis of Anions at sub-ppb level



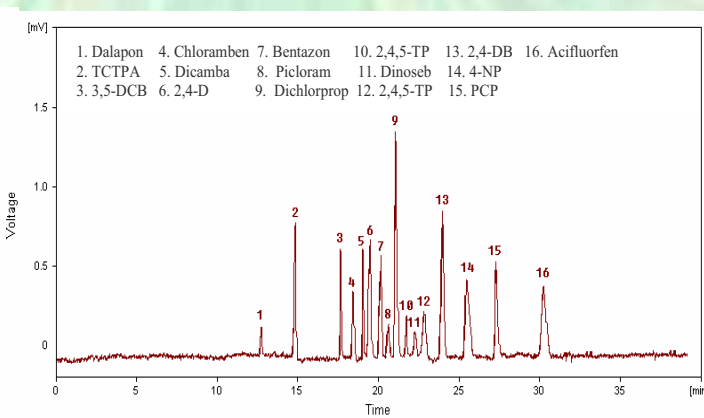
Trace analysis of Cations at sub ppb level



Separation of X174 DNA by CE-P2 coupled with UV (A) and PGD (B) detector



Analysis of PAH mixture



Separation of 16 chlorinated acid herbicides

To own a powerful instrument for both in-lab and on-site use  
 or to find out more about capillary electrophoresis,  
 please contact **CE Resources Pte Ltd.**

# The World's Only Portable CE System Small in Size *but* Wide-Ranging in Applications & Robust for Field Use...



To learn more about CE Technology  
and product, please visit our  
website:

[www.ce-resources.com](http://www.ce-resources.com)



For all orders, enquiries and  
application support,  
please contact:

Authorized Distributor

## About CE Resources Pte Ltd

The company designs, manufactures and supplies capillary electrophoresis (CE) instruments in modular systems for biochemical analysis. CE is a modern analytical technique that uses narrow-bore fused silica capillaries to separate a wide range of large and small molecules, such as DNA, proteins, carbohydrates, drugs and inorganic ions. It is the enabling technology behind the recent success of DNA sequencing and the human genome project.

### Our Products Program

Our core products comprise the portable CE Systems (**CE-P2**) and desktop CE Systems **Class Eleganza (CE-L1)**. Built on our proprietary technology, CE-P2 is currently the only portable automated CE System in the world. A third product, the Multi-channel High Voltage Power Supply, which has been very popular for researchers working on CE-on-Chips technology completes our Products Program.

### Our Extended Services Program

Besides CE products program, we undertake jobs for consultancy services, collaborations with research institutes and industries to advance the industries' standards to a new level. We also work closely with leading Third Party Manufacturers to promote new products and technology concept for the benefits of our customers. As a service oriented company, we supply consumables and accessory items for CE, and chemical and biochemical testing services for a comprehensive user-support program.

### Know-how Expertise & Customization

CE Resources does not sell instruments alone. What makes us different is that we are a **provider of solutions** to our customers. Our scientists and engineers have in-depth knowledge of instrumentation and applications. We have the know-how to package the best of technology and techniques, and provide tailor-made solutions, and customize them to the exact requirement of our customers' lab and production processes. This 'one-stop-shop' approach ensures compatibility of parts and provides a tailor made solution from a single supplier. For your special needs, just contact our sales team to discuss your requirements.

### Service

We pride ourselves to excel in the delivery of high quality service with a human touch. Our staff will go the extra mile to assist our customers with method development, trouble-shooting of a lab process, and process analysis problems usually face-to-face, and at other times remotely, made possible with help from modern technology.

### Reliability

CE systems are designed to provide years of dependable trouble-free operation. Our fully trained representatives respond promptly to your needs. Our company is committed to provide comprehensive product training and high standard of after sales support.

### Our Future

We focus on what we do best and leverage on our know-how and nimbleness to capitalize on the services strategy, and bring new product capabilities to a new platform. We will continue to listen to our customers and deliver the technology and products necessary to be integral to the success of the scientific community.



The Future, our Goal ... Lab-on-Chip