

APPLICATION NOTE

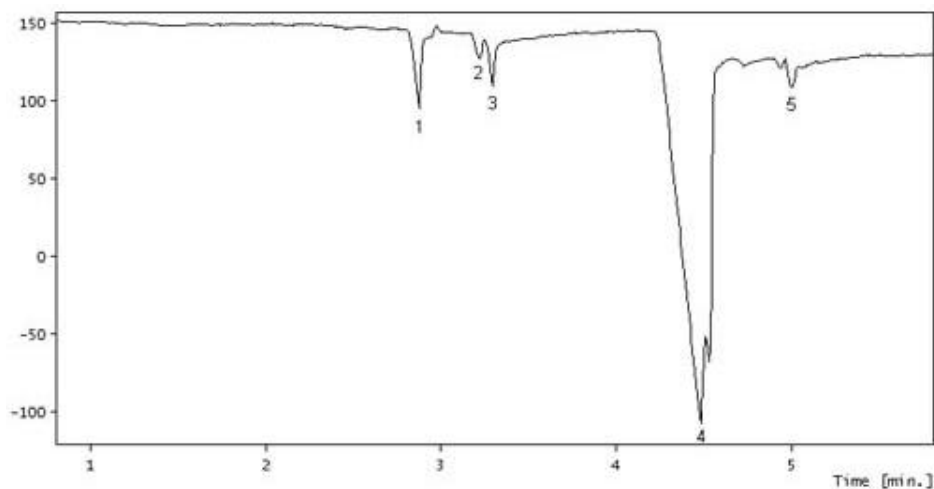
Application Note : 004

Title of application :

Determination of anions in mineral water

Area of application :

Water Analysis



Conditions :

Buffer	CE-AN001 Kit
Sample	Mineral water acquired from the supermarket. 1. Cl ⁻ (3 ppm); 2. NO ₃ ⁻ (1.2 ppm); 3. SO ₄ ²⁻ (2.5 ppm); 4. CO ₃ ²⁻ (80 ppm); 5. Unknown
Capillary	50µm ID, 35cm Length
Injection mode	Hydrodynamic injection for 30 second at 10cm
Separation setting	-7kV
Instrument used	CE-P1

Description :

CE-P1 can detect common anions in mineral water directly without the need of any sample pre-treatment.

The levels of common anions can reflect the quality of the mineral water. This is especially true for the case of NO₂⁻ and NO₃⁻ which are important parameters for monitoring bio-contamination of the water.