

APPLICATION NOTE

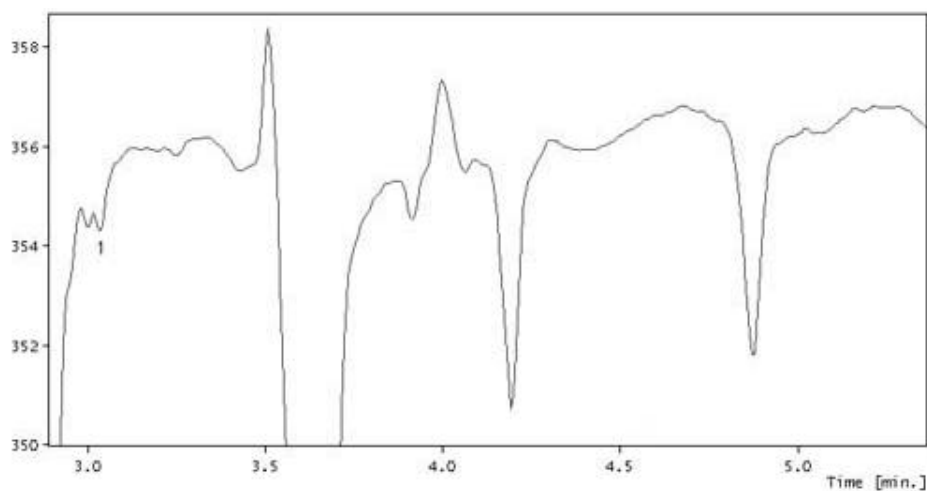
Application Note : 005

Title of application :

Determination of bromate in water

Area of application :

Water Analysis



Conditions :

Buffer	CE-AN001 Kit
Sample	1. Bromate (10 ppb) in a water sample
Capillary	30µm ID, 30 cm length
Injection mode	Electrokinetic injection at -7kV for 5 seconds
Separation setting	-7.2kV
Instrument used	CE-P1

Description :

Using electrokinetic injection, ppb level of bromate can be detected using CE-P1. Determination of low levels of bromate anions are of interest due to their possible carcinogenic properties. Bromate appears as possible by-product of the ozonation of bromide-rich water (such as drinking water supplies from open sources near the sea). Currently, the practical quantitation level for bromate in drinking water set by the US EPA is 10mg/l (ppm) based on IC.