

# APPLICATION NOTE

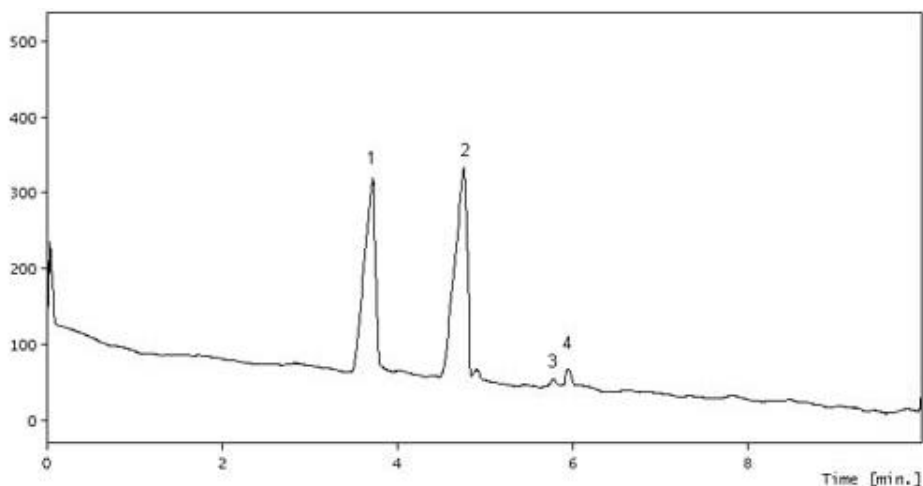
**Application Note :** 009

**Title of application :**

Analysis of minerals in food samples

**Area of application :**

Food Analysis



**Conditions :**

Buffer	CA-002
Sample	Chinese tea (Peaks: 1. potassium, 2. sodium 3. calcium 4. magnesium)
Capillary	50 $\mu\text{m}$ i.d, 38 cm length
Injection mode	Hydrodynamic injection
Separation setting	7 kV
Instrument used	CE-P1

**Description :**

Minerals, such as sodium, potassium, calcium and magnesium, are essential dietary constituents. Importance of minerals is enormous to human body. Sodium and potassium are required for the normal functioning of the nerves and muscles. Calcium and magnesium contribute to the building up of the tissues and ensuring proper function of many enzyme systems. Analysis of Na, K, Ca and Mg in food samples can be completed using capillary electrophoresis with the CE-P1. Advantages of such an analysis include high speed and low cost. In addition, sample preparation is mostly simplified.